



# GLOPRO-1617-SV

## FEATURES

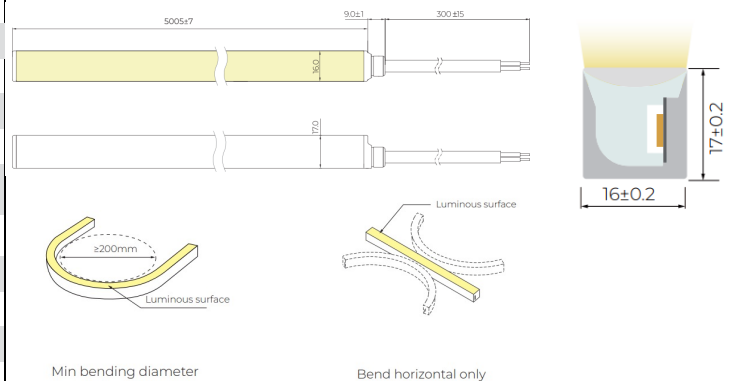
- Made of silicone rubber, providing higher transparency & strength.
- Environmental protection grade material with an integrated extrusion molding process.
- Unique optical light distribution structure design - uniform lighting surface and no shadows.
- Excellent toughness with a simple and stylish appearance
- IP 67 protection level with salt solution resistance, acids & alkali, and UV resistance.
- Multidirectional bending - perfect for architectural curves
- Side View Horizontal Bending



Basic Parameters	Details
Power	10W/1m or 50W/5m
Input Voltage	DC24V
Lifetime	>30,000 hours
Continuous Max Run	5 metres / custom
Colour/CCT	2700K / 3000K / 4000K / 6500K / RGB / RGBW+CCT
Bin Step (SDCM)	1 Bin 2 Step Mac Adam Ellipse 67
Ingress Protection Rating	IP67 / IP68
CRI	>90
Energy Efficiency Class	A+
Warranty	5 years or 30,000 hours
Beam Angle	60° / 90° / 170°
Control	Phase-cut leading & trailing / 0-10V / 1-10V / PWM / DMX / DALI

Product Ordering			
Code	Colour	LM/M	STOCKED
GLOPRO-24-1617SV-2700-67	2700K	644	YES
GLOPRO-24-1617SV-3000-67	3000K	677	YES
GLOPRO-24-1617SV-4000-67	4000K	727	YES
GLOPRO-24-1617SV-6500-67	6500K	695	YES
GLOPRO-24-1617SV-RGB-67	RGB	329	YES
GLOPRO-24-1617SV-RGBW-67	RGBW+CCT	635	YES

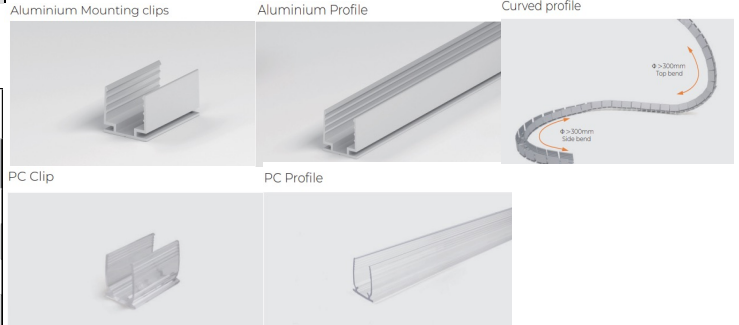
## DIMENSIONS



Min bending diameter

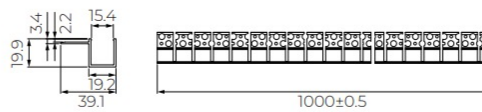
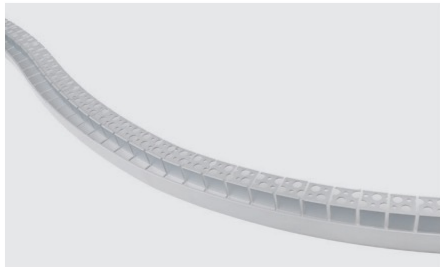
Bend horizontal only

## RECOMMENDED PROFILES



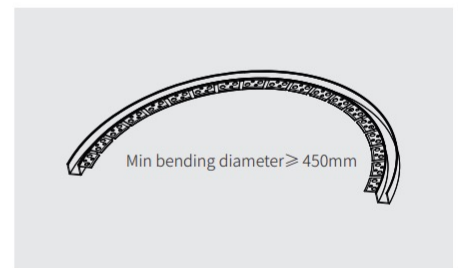
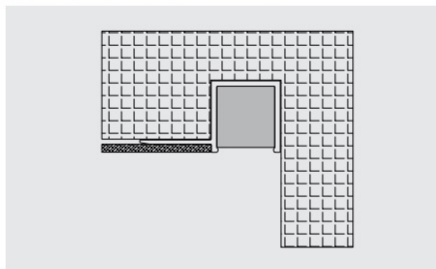
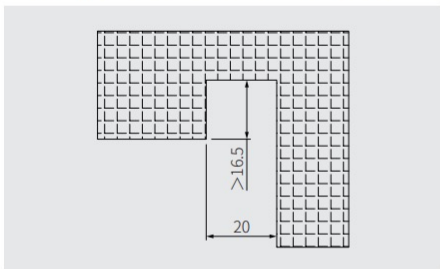
# Special 1617 Recessed Bendable Profile

Flexible Recessed  
Single-Sided Aluminum Profile

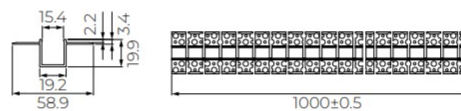
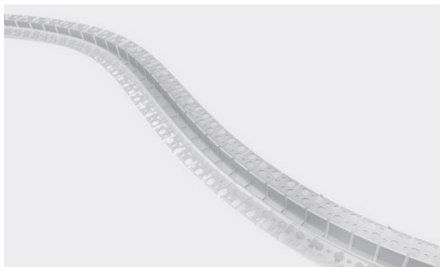


Length:  
1000x39.1x19.9  
Accessories:  
Screw M3X16 (SUS304)

Installation method of flexible recessed single-sided aluminum profile



Flexible Recessed  
Double-Sided Aluminum Profile



Length:  
1000x58.9x19.9  
Accessories:  
Screw M3X16 (SUS304)

Installation method of flexible recessed double-sided aluminum profile

